

**SILENT TRAC**  
*by* **CURRENT**

**USER GUIDE/OWNERS MANUAL**

Using the Drapery Track .....2  
Using the Pendant for Operation .....2  
    Using Smart Assist .....2  
Using the Remote Control - Single Drapery .....3  
    Using the Remote Control - Dual Drapery .....4  
Using the Light and Temperature Sensors in the Control Housing .....5  
    Changing Alkaline Batteries .....6  
    Charging Lithium Ion Batteries .....6  
    Statements .....7

# USING THE DRAPERY TRACK

## USING THE PENDANT FOR OPERATION

The Pendant, can be pulled down or pushed up, depending on the desired movement.

**On a single drapery**, pulling the Pendant down activates the curtain. Pulling down once makes the curtain move towards the next position, depending on if the curtain is open or closed. Pushing the Pendant up will stop it. Pulling down a second time after stopping will allow the curtain to move in the opposite direction.

**On a dual drapery**, pulling the Pendant down activates the curtain plugged into the motor 1 slot. Pulling down once makes the curtain move towards the next position, depending on if the curtain is open or closed. Pulling down a second time will stop it. Pulling down a third time, shortly after stopping will allow the curtain to move in the same direction as before. Pulling down after several seconds will change the direction the curtain moves.

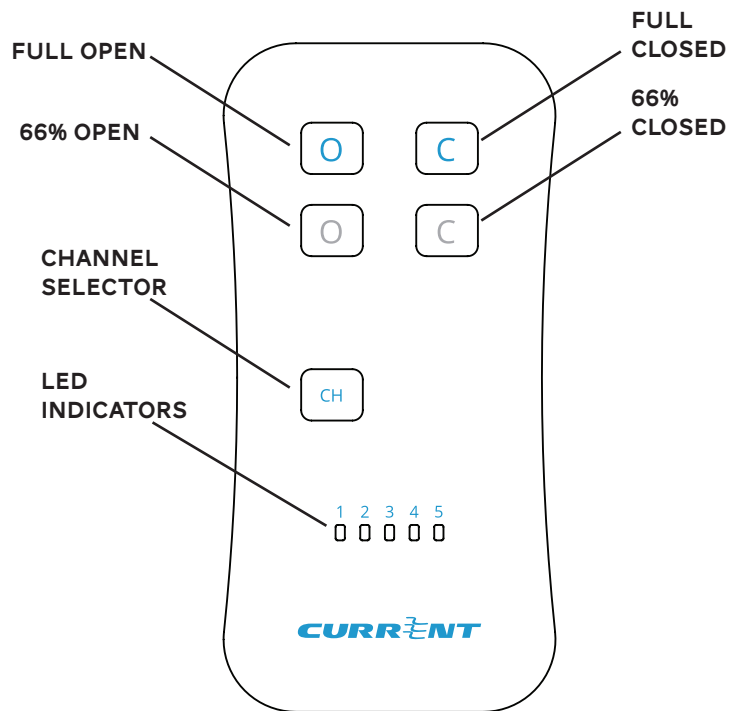
Pushing up on the Pendant will activate the curtain plugged into the motor 2 slot. Pushing up once makes the curtain move towards the next position, depending on if the drapery is open or closed. Pushing up a second time will stop it. Pushing up a third time, shortly after stopping will allow the curtain to move in the same direction as before. Pulling down after several seconds will change the direction the curtain moves.

## USING SMART ASSIST

Smart Assist is a drapery track feature to allow users the ability to begin an open or close movement manually, and have the drapery automatically complete the movement.

To trigger Smart Assist, simply pull the curtain approximately one foot towards the direction you would like to move the curtain. Upon release, the curtain will continue moving in that direction until it reaches the full open or closed position.

## USING THE REMOTE CONTROL- SINGLE DRAPERY



**Full Open-** A press and release moves the drapery to the full open position. A press and hold will move the drapery towards the open position, and stop it precisely upon release.

**Full Closed-** A press and release moves the drapery to the full closed position. A press and hold will move the drapery towards the closed position, and stop it precisely upon release.

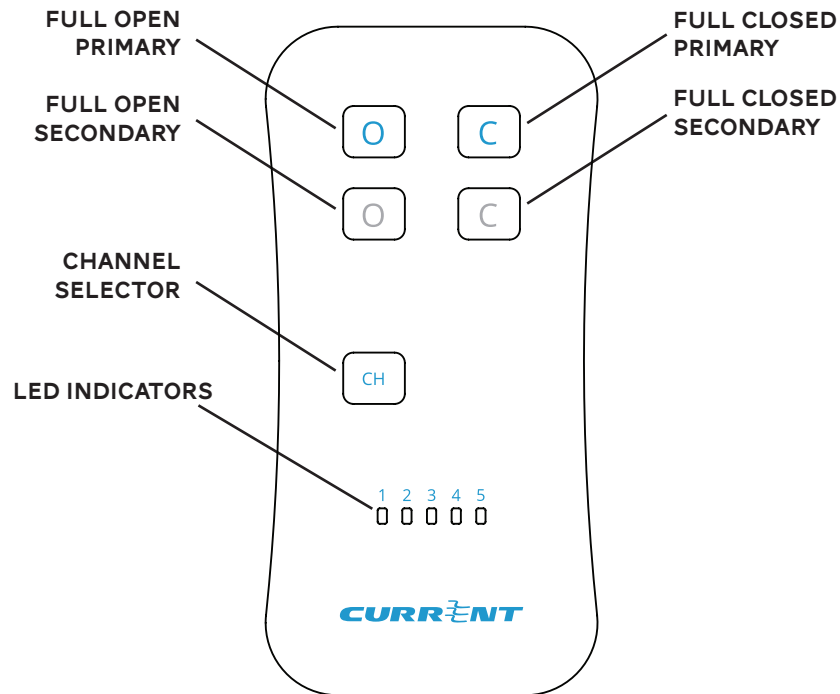
**66% Open-** A press and release moves the drapery to the approximately 66% open position.

**66% Closed-** A press and release moves the drapery to the approximately 66% closed position.

**Channel Selector-** Successive presses and releases will change the remote channel. Current channel will be reflected on the LED indicators.

**LED Indicators-** Indicator lights for various remote functions.

## USING THE REMOTE CONTROL- DUAL DRAPERY



**Full Open Primary**- A press and release moves the drapery plugged into the motor 1 slot to the full open position.

**Full Closed Primary** - A press and release moves the drapery plugged into the motor 1 slot to the full closed position.

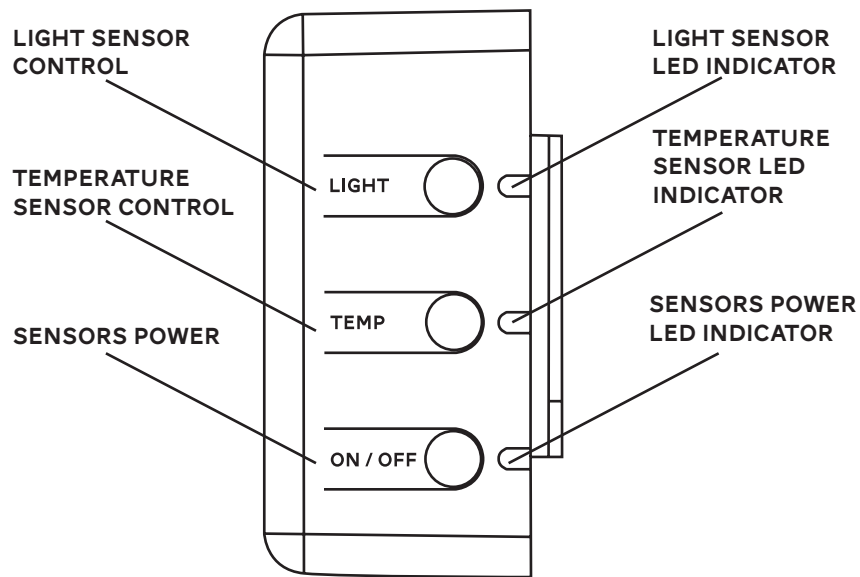
**Full Open Secondary**- A press and release moves the drapery plugged into the motor 2 slot to the full open position.

**Full Closed Secondary**- A press and release moves the drapery plugged into the motor 2 slot to the full closed position.

**Channel Selector**- Successive presses and releases will change the remote channel. Current channel will be reflected on the LED indicators.

**LED Indicators**- Indicator lights for various remote functions.

## USING THE LIGHT & TEMPERATURE SENSORS ON THE CONTROL HOUSING



**Light Sensor Control** - A press and release displays the current mode of the light sensor. A second press and release changes the mode of the automated movements triggered by the light sensor.

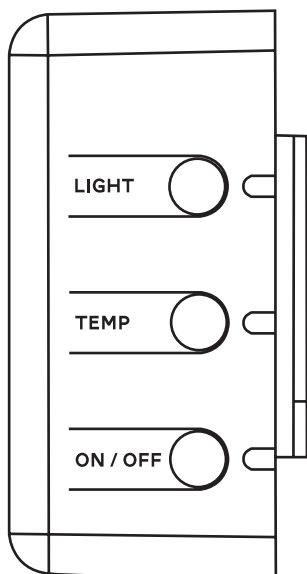
**Temperature Sensor Control**- A press and release displays the current mode of the temperature sensor. A second press and release changes the mode of the automated movements triggered by the temperature sensor.

**Sensors Power**- A press and release displays the current mode. A second press and release will change the mode of all sensor enabled automated movements between enabled or disabled.

**Light and Temperature Sensor LED Indicators**- Indicates which mode the sensor is in when the corresponding button is pressed and released.

**Sensors Power LED Indicator**- Indicates which mode the sensors are in when the corresponding button is pressed and released. A red LED means the sensors are off. A green LED means they are on.

### SENSOR MODES



The integrated light and temperature sensors have three possible modes: Off, Fully Automatic, and Semi-Automatic.

**Off**- The device will not make any movement triggered by this sensor.

**Fully Automatic**- The device will open and close the curtains based on the sensor readings.

**Semi-Automatic**- The device will close the curtains based on sensor readings, but will not open them.

These modes are indicated using the LEDs on the right of the control box.

- A RED light indicates the sensor is OFF
- A FLASHING GREEN light indicates the sensor is in SEMI-AUTOMATIC
- A SOLID GREEN light indicates the sensor is in FULLY AUTOMATIC

Press and release the sensor buttons to toggle through the modes.

## CHANGING ALKALINE BATTERIES

### 1. Remove old batteries.

Untwist the Pendant and remove the dead (6) or (8) D Alkaline batteries,

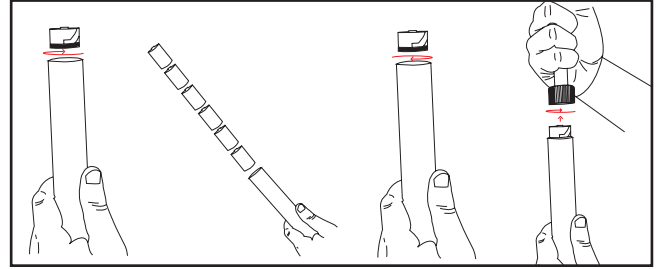


Fig. X; Remove old then Insert new Batteries into the Pendant

### 1. Insert new batteries

Next, insert new (6) or (8) Alkaline batteries, negative end first. Twist the Pendant lock to secure back onto the unit.

NEVER mix old and new batteries. NEVER use damaged or dropped batteries. If possible, test batteries before using.

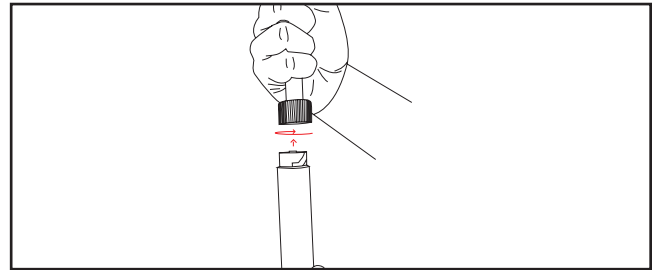


Fig. X; Screw the Pendant onto the Cord

## CHARGING LITHIUM ION BATTERIES

### 1. Plug in the Pendant

To charge, plug the charger power input into the jack in the bottom of the Pendant and plug the wall port into the desired outlet. The Pendant does not need to be connected to the drapery to charge.

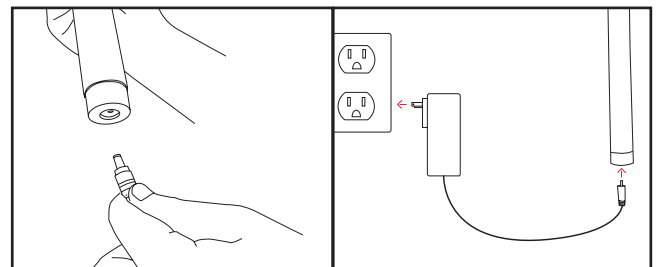


Fig. X

## STATEMENTS

### FCC STATEMENT

This device complies with Part 15 of the FCC Rules. Operation is subject to the following two conditions:

1. This device may not cause harmful interference, and
2. This device must accept any interference received, including interference that may cause undesired operation.

**Warning:** Changes or modifications not expressly approved by Current Products Co. could void the user's authority to operate the equipment.

**NOTE:** This equipment has been tested and found to comply with the limits for a Class B digital device, pursuant to Part 15 of the FCC Rules. These limits are designed to provide reasonable protection against harmful interference in a residential installation. This equipment generates, uses, and can radiate radio frequency energy and, if not installed and used in accordance with the instructions, may cause harmful interference to radio communications. However, there is no guarantee that interference will not occur in a particular installation. If this equipment does cause harmful interference to radio or television reception, which can be determined by turning the equipment off and on, the user is encouraged to try to correct the interference by one or more of the following measures:

- Reorient or relocate the receiving antenna.
- Increase the separation between the equipment and receiver.
- Connect the equipment into an outlet on a circuit different from that to which the receiver is connected.
- Consult the dealer or an experienced radio/TV technician for help.

### RF WARNING STATEMENT

This equipment complies with FCC/ISED radiation exposure limits set forth for an uncontrolled environment. This equipment should be installed and operated to provide a separation distance of at least 20 cm from all persons.

Cet équipement est conforme aux limites d'exposition au rayonnement FCC / ISED établies pour un environnement non contrôlé. Cet équipement doit être installé et utilisé de manière à assurer une distance de séparation d'au moins 20 cm de toutes les personnes.

### IC STATEMENT

This device complies with Industry Canada license-exempt RSS standard(s). Operation is subject to the following two conditions: (1) this device may not cause interference, and (2) this device must accept any interference, including interference that may cause undesired operation of the device.

Le présent appareil est conforme aux CNR d'Industrie Canada applicables aux appareils radio exempts de licence. L'exploitation est autorisée aux deux conditions suivantes: (1) l'appareil ne doit pas produire de brouillage, et (2) l'utilisateur de l'appareil doit accepter tout brouillage radioélectrique subi, même si le brouillage est susceptible d'en compromettre le fonctionnement.



844-307-7435  
support@currentproductscorp.com

[www.currentproductscorp.com](http://www.currentproductscorp.com)