

SILENT TRAC

by ***CURRENT***

WALL MOUNT INSTALLATION GUIDE

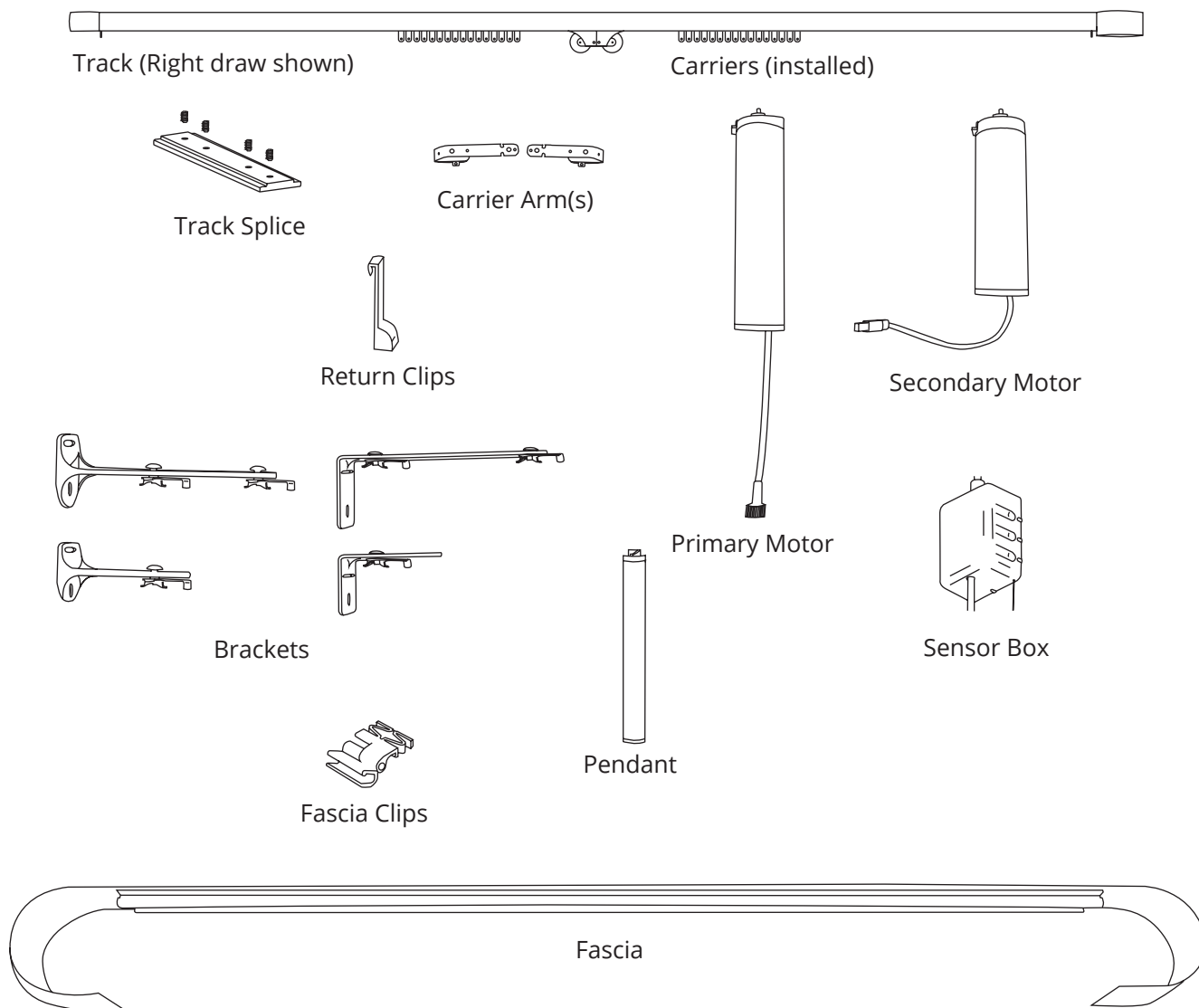
Wall Mount Drapery Track Installation and Connecting the Motors	2
Table 1: Wall Mount Single Bracket Spacing Guidelines	4
Table 2: Wall Mount Dual Bracket Spacing Guidelines	5
Start Up	12
Statements	14

WALL MOUNT DRAPERY TRACK INSTALLATION

For additional help during installation of your drapery track, visit www.currentproductscorp.com/support/drapery-track or call 1-844-307-7435.

For proper installation of your track drapery, the following tools are required:

- 1/4" nut driver
- 5/64" hex screwdriver (spliced tracks only)
- 6" magnetic bit holder extension for drill
- Tape measure
- Drill
- Level
- Pencil
- Ladder
- 7/64" drill bit for stud applications
- 1/4" drill bit for drywall applications with toggler anchors
- #2 Phillips Screwdriver
- Stud Finder (optional)
- Flathead Screwdriver (optional)
- Vacuum Cleaner
- Safety Goggles



I. WALL MOUNT DRAPERY TRACK INSTALLATION

Double check drapery height, drapery width, and track length before beginning your installation. The width of your panels should be large enough to cover the length of your track plus any return distance, plus any overlap in the case of a center draw application.

1. INSTALL THE BRACKETS

Install the outer brackets first. Locate the centerline position of the outer brackets 6" from each end of the track. See Figure 1.

If the drapery is center draw, use the centerline of the window opening as a reference. For side draw applications, adjust track position if necessary to accommodate for drapery stackback.

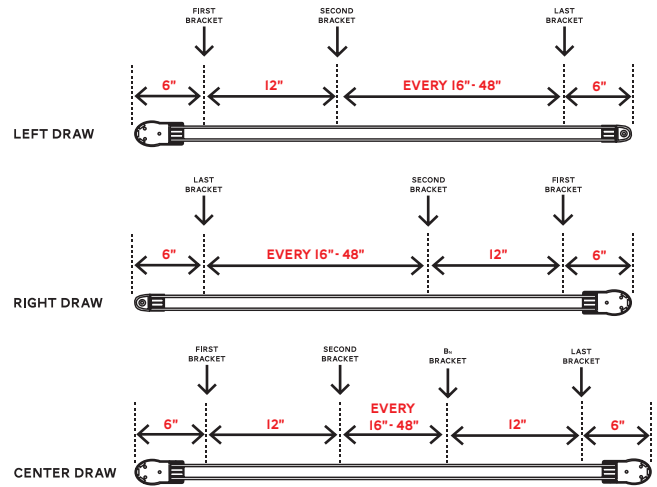


Figure 1 - Bracket Placement

Measure and mark the centerline of the window. Then with a pencil, measure and mark the location of the outer bracket centerline, L_{obc} , with a vertical line. See Figure 2.

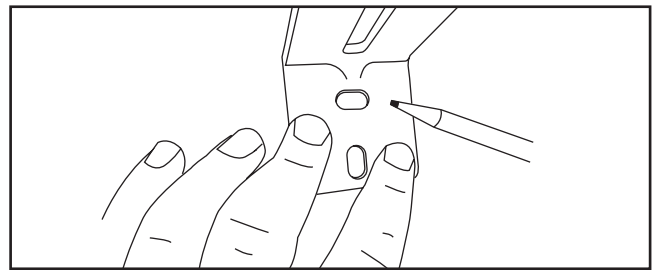


Figure 2 - Mark bracket placement

Some advertised drapery heights are not precise. To be certain of bracket installation height (BH), carefully measure the drapery height. With a pencil, locate the vertical position of the wall bracket based on the drapery height (DH), bottom clearance (BC), and track exposure (TE). See Figure 3.

Minimum track exposure for under mount applications is 1.25". Recommended bottom clearance is 1/2" to 1".

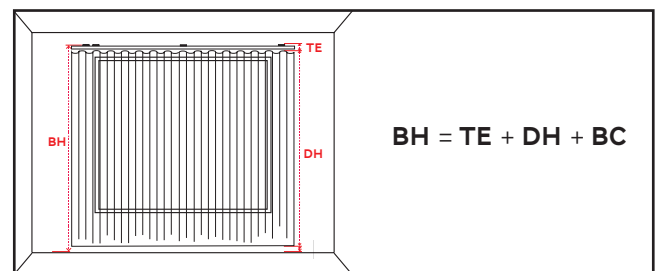


Figure 3 - Calculate bracket installation height

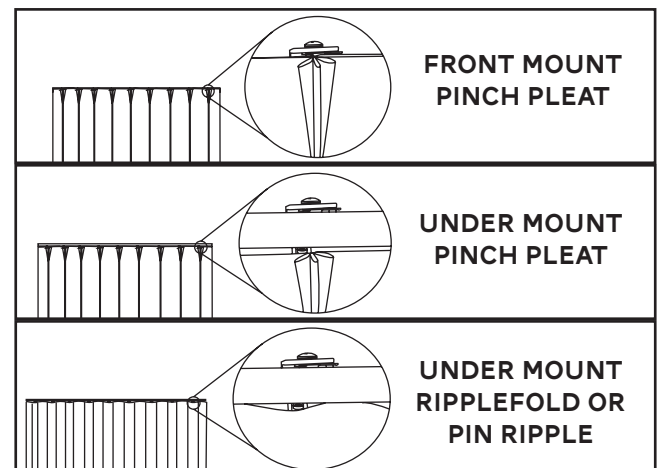


Figure 3.1- Be aware of pin setting differences

Be aware of the desired pin setting, as the track exposure may be a negative number for front mount applications. See Figure 3.1.

Reference the bottom side of the wall bracket camlock protrusion and align with the horizontal mark on the wall. See Figure 4.

Prior to mounting hardware, double check levelness and parallelism with ceiling and floor. Check for levelness and height correctness. In some cases it is more important aesthetically to maintain uniform clearance of the drapery with the floor.

Slide the wall bracket over until the vertical pencil mark aligns with the centerline of the wall bracket and the horizontal pencil mark aligns with the bottom side of the wall bracket camlock protrusion.

Using appropriate mounting hardware and installation methods, securely mark and screw the wall bracket to the wall. Do not over tighten. There should be no movement between the bracket and wall after installation.

Bracket spacing should never exceed 48". Always place a 2nd bracket within 12" of the outer bracket on the motor end of the track. See Figure 5.

Install subsequent single interior brackets using the recommended spacing on the chart provided. See Table 1. Install subsequent dual interior brackets using the recommended spacing on the chart provided. See Table 2.

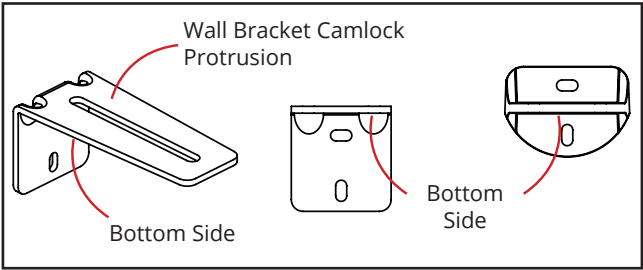


Figure 4 - Use bottom side of brackets as reference point for install height

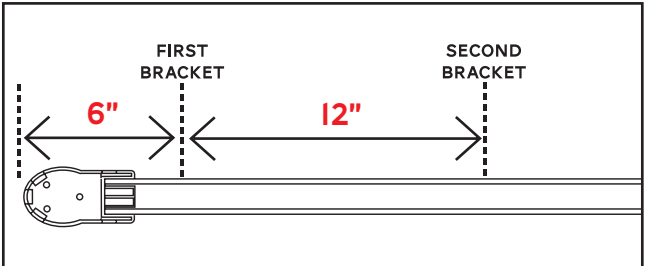


Figure 5 - Install first bracket six inches in, then the second bracket twelve inches in from the first

TABLE I: WALL MOUNT SINGLE BRACKET SPACING GUIDELINES

Bracket spacing based on drywall installation using wall anchors.

	Curtain Weight lb/ft	Bracket Spacing inches
LEFT DRAW	0.25 - 0.50	48
	0.51 - 1.00	48
	1.01 - 1.50	48
	1.51 - 2.00	48
	2.01 - 2.50	48
RIGHT DRAW	2.51 - 3.00	48
	3.01 - 3.50	48
	3.51 - 4.00	48
	4.01 - 4.50	48
	4.51 - 5.00	48
CENTER DRAW	5.01 - 5.50	48
	5.51 - 6.00	45
	6.01 - 6.50	42
	6.51 - 7.00	38
	7.01 - 7.50	36
	7.51 - 8.00	32

TABLE 2: WALL MOUNT DUAL BRACKET SPACING GUIDELINES

Bracket spacing based on drywall installation using wall anchors.

Front Curtain Weight/ft	Rear Curtain Weight/ft						
	0.25 - 0.50	0.51 - 1.00	1.01 - 1.50	1.51 - 2.00	2.01 - 2.50	2.51 - 3.00	3.01 - 3.50
	Bracket Spacing						
0.25 - 0.50	48	48	48	48	48	48	48
0.51 - 1.00	48	48	48	48	48	48	48
1.01 - 1.50	48	48	48	48	48	48	48
1.51 - 2.00	48	48	48	48	48	48	48
2.01 - 2.50	48	48	48	48	48	48	48
2.51 - 3.00	48	48	48	48	48	45	45
3.01 - 3.50	48	48	48	48	45	45	42
3.51 - 4.00	48	48	45	45	42	42	39
4.01 - 4.50	45	45	42	42	39	39	36
4.51 - 5.00	42	39	36	36	34	34	32
5.01 - 5.50	36	36	34	34	32	32	30
5.51 - 6.00	34	34	32	32	30	30	28
6.01-6.50	32	30	30	28	28	28	26
6.51-7.00	30	28	28	28	26	26	26
7.01-7.50	28	26	26	24	24	24	24

Front Curtain Weight/ft	Rear Curtain Weight/ft						
	3.51 - 4.00	4.01 - 4.50	4.51 - 5.00	5.01 - 5.50	5.51 - 6.00	6.01-6.50	6.51-7.00
	Bracket Spacing						
0.25 - 0.50	48	48	48	48	48	48	48
0.51 - 1.00	48	48	48	48	48	48	48
1.01 - 1.50	48	48	48	48	48	45	45
1.51 - 2.00	48	48	48	48	45	45	42
2.01 - 2.50	48	45	42	42	39	39	36
2.51 - 3.00	42	42	39	39	36	36	36
3.01 - 3.50	42	39	39	36	36	32	32
3.51 - 4.00	39	36	36	32	32	32	30
4.01 - 4.50	36	34	32	32	30	30	28
4.51 - 5.00	32	30	30	30	28	28	26
5.01 - 5.50	30	28	28	28	26	26	26
5.51 - 6.00	28	28	26	26	24	24	24
6.01-6.50	26	26	24	24	24	24	24
6.51-7.00	26	24	24	22	22	22	22
7.01-7.50	24	22	22	22	22	20	20

Installers should place brackets closer than recommended in instances where necessary.

Pro Tip: The track can be used as a straight edge to help locate the correct position of interior wall brackets. Once the outer brackets have been installed, place the track on the top of the outer bracket with the carriers facing up. Check the levelness and the distance to the floor. See Figure 6.

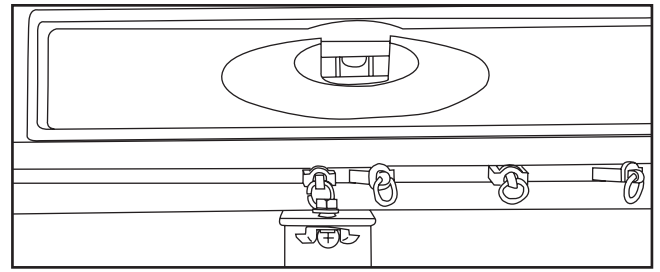


Figure 6 - Put level on track

Then, position the interior brackets flush to the track and make your marks where each bracket needs to go. See Figure 7.

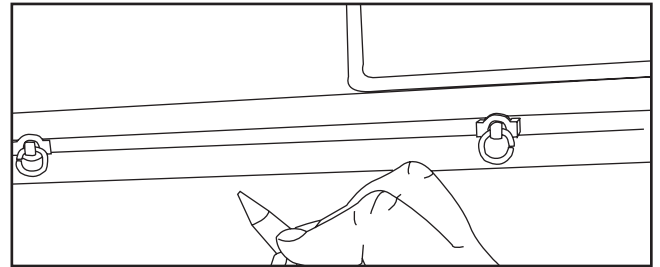


Figure 7 - Use track as straight edge to mark bracket positions.

A) **If using wall anchors**, follow the manufacturer specifications for each wall anchor. In cases where the anchor needs to be installed through drywall mud and drywall tape, a 1/4" pilot hole is recommended. Using firm pressure square to the wall will reduce the likelihood of wall anchors stripping. Avoid stripping the anchors by reducing torque level on your drill. Place the bracket against the wall, lining the holes up with the anchors. Screw in each screw to secure bracket. Do not over torque. There should be no bracket movement after installation. Top of bracket should be level after installation. See Figure 8.

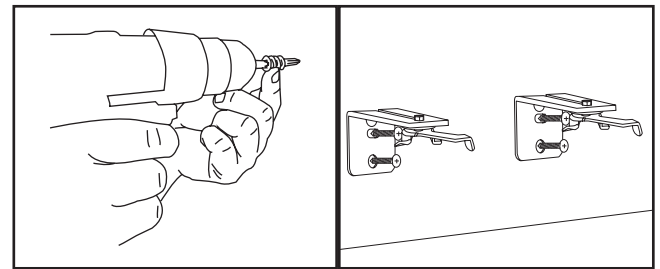


Figure 8 - Screw in wall anchor and install brackets

B) **If drilling into studs**, wall anchors are necessary. Carefully drill a pilot hole for all screws. Use a 7/64" drill bit for the pilot holes if using the provided screws. Place the bracket against the wall, lining the holes in the bracket up with the holes in the wall. Screw in each screw until secure. Make sure your screw has solid embedment into the stud. Do not over torque. There should be no bracket movement after installation. Top of bracket should be level after installation. See Figure 9.

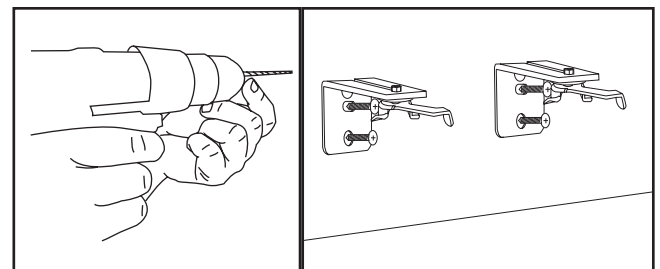


Figure 9 - Drill pilot hole and install brackets

C) **If drilling into something other than drywall or studs**, consider the substrate and pre-drill holes accordingly. Place the bracket against the wall, lining the holes in the bracket up with the holes in the wall. Screw in each screw until secure. Do not over torque. There should be no bracket movement after installation. Top of bracket should be level after installation. See Figure 10.

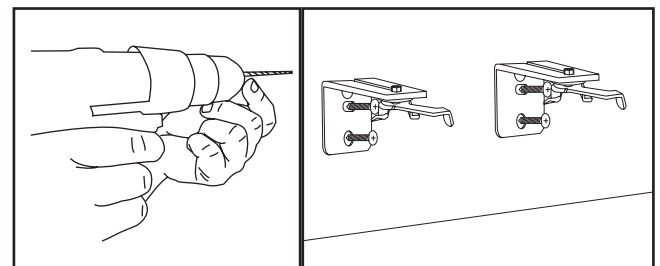


Figure 10 - Drill pilot hole and install brackets

2. INSTALL THE TRACK

Before installing the track, measure the length of the track to determine the centerline.

Begin with the camlocks in the open position. See Figure 15.

Mark the centerline of the track.

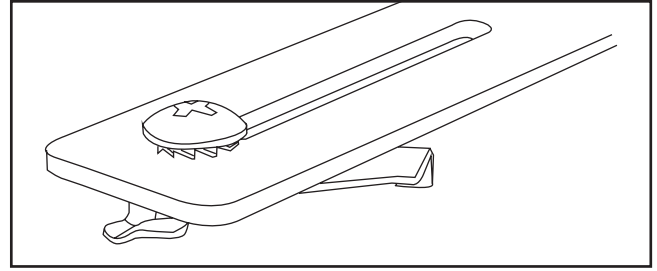


Figure 15 - Camlock in open position

Starting in the middle, secure the track onto each of the brackets using each camlock. Push the track upward so the camlock feature rests in the groove of the top of the track. Position the track to properly cover the window. For center draw applications, align the centerline of the track with the centerline of the window opening. See Figure 16.

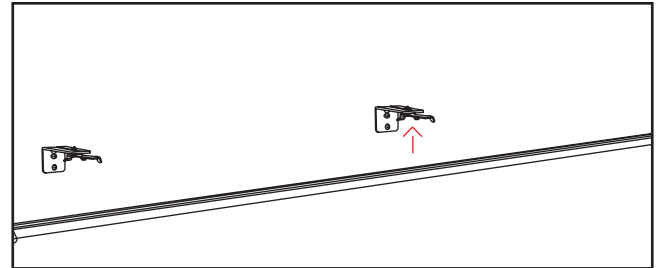


Figure 16 - Push the track up

Position the track to properly cover the window. For center draw applications, align centerline of track with centerline of window opening.

Starting in the middle, secure the track onto each of the brackets using each camlock. Push the track upward so the camlock features rest in the groove on the top of the track.

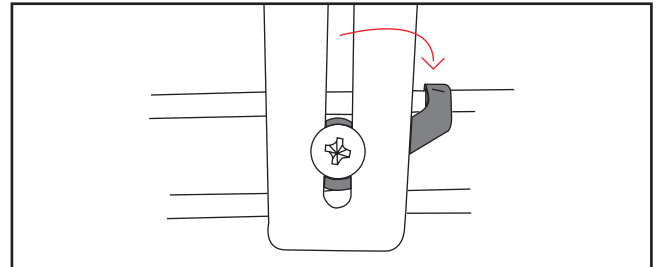


Figure 17 - Turn the camlock arm to tighten

Turn the camlock arm to the right so the features inside the top track groove bite in and hold. Once all the camlocks are closed, use a screwdriver to tighten each camlock so the track is secure. See Figure 17.

3. ADJUST NUMBER OF CARRIERS AND ORIENT THE CARRIER ARMS

It may be necessary to add or remove carriers based on the curtain size, fullness, and pleat spacing. To add or remove carriers, remove the motor if it is installed. Then, loosen the hardstop screw and slide it out of the track. See Figure 18.

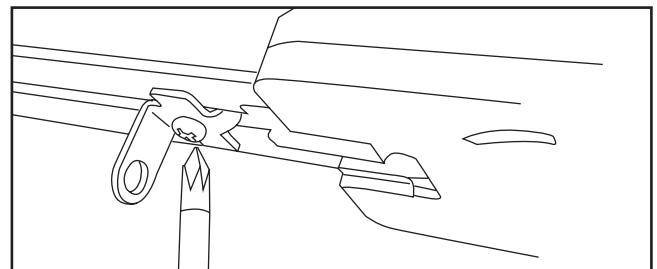


Figure 18 - Remove hardstop

Insert or remove carriers until the correct amount remain in the track. Center draw applications may require adding or subtracting carriers from each side.

For pleated drapery, insert or remove carriers until the correct amount remain in the track. Center draw applications may require adding or subtracting carriers from each side.

See Figures 19 & 20.

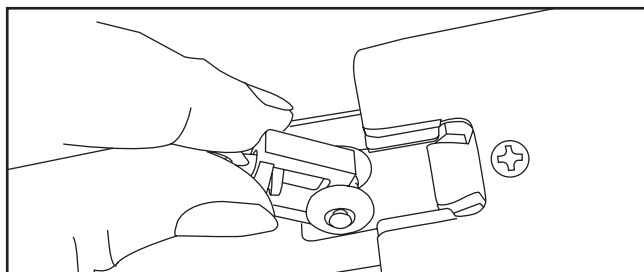


Figure 19 - Add or remove pin carriers

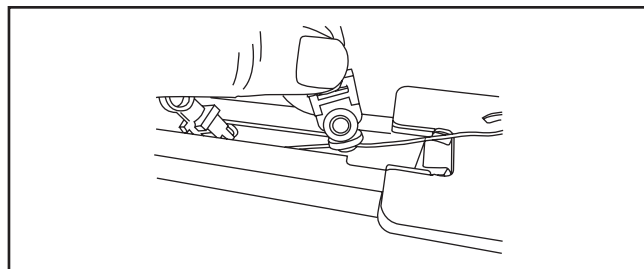


Figure 20 - Add or remove string carriers

Based on where the window is located, there may be a desire to reverse the orientation of an overlap carrier arm set. To reverse the orientation, unscrew each arm from the master carriers, and swap the two. See Figure 22.

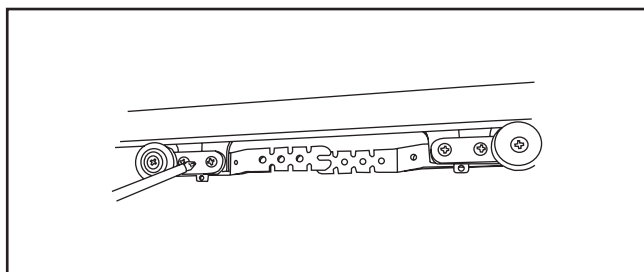


Figure 22 - Reorient carrier arms if necessary

Slide the hardstop back into the track and secure with screw. See Figure 23.

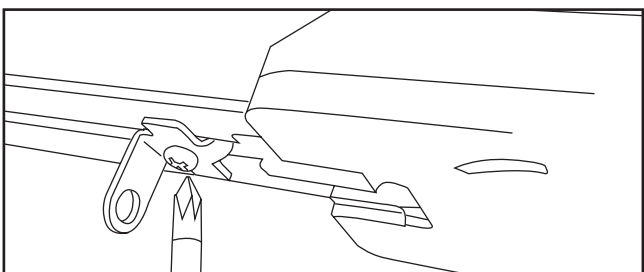


Figure 23 - Slide hardstop back into track and secure with screw

3. CONNECT THE MOTORS

On a single drapery, insert the motor shaft onto the motor end of the drapery track and twist the motor into place. See Figure 24.

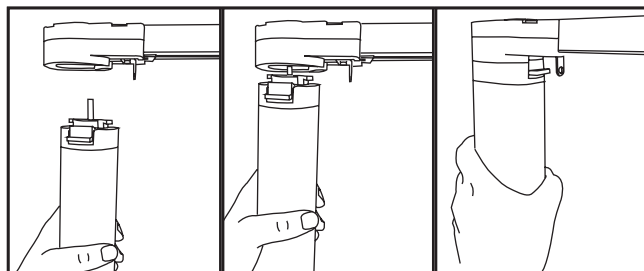


Figure 24 - Attach motor

On a dual drapery, insert Motor 1 (longer) into the window side track. On center draw applications, the motor may be mounted at either end of the track. Twist the motor into place. The locking tab will make an audible click when it locks into place. See Figure 25.

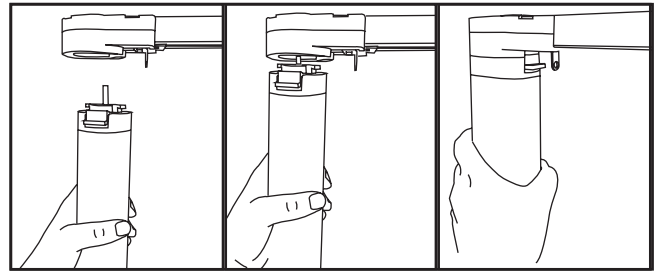


Figure 25 - Attach primary motor

Insert Motor 2 (shorter) into the roomside track. Twist the motor into place. The locking tab will make an audible click. See Figure 26.

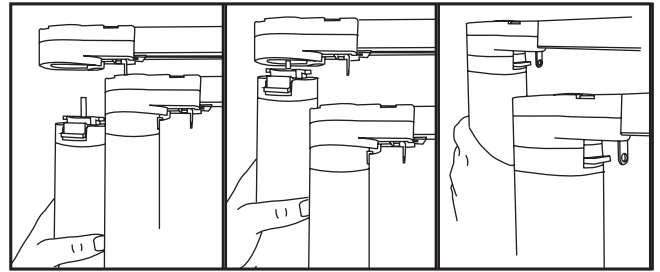


Figure 26 - Attach secondary motor

Orienting the plug correctly, plug the cord from Motor 2 into the bottom of Motor 1. If you do have a control box, proceed to Step 6. See Figure 27.

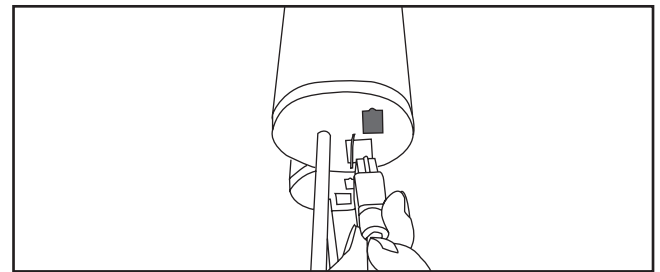


Figure 27 - Plug secondary motor into primary motor

4. CONNECT THE SENSOR BOX (Optional)

Place and install the sensor box behind the drapery in a place where the Pendant is still accessible and the sensors will still detect light coming in from the window. See Figure 28.

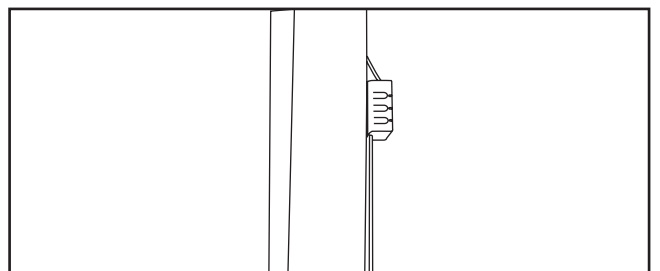


Figure 28 - Sensor box placement

Screw the wall plate into the desired location, using wall anchors if necessary, then slide the sensor box over the plate until it sits securely. See Figure 29.



Figure 29 - Attach sensor box to wall

On a **single drapery**, plug the motor into the Motor 1 slot. See Figure 30.

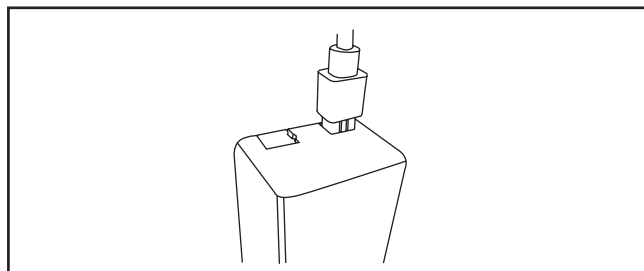


Figure 30 - Motor plugged into slot

On a **dual drapery**, plug the room side drapery into the Motor 1 slot and window side drapery into the Motor 2 slot. See Figure 32.

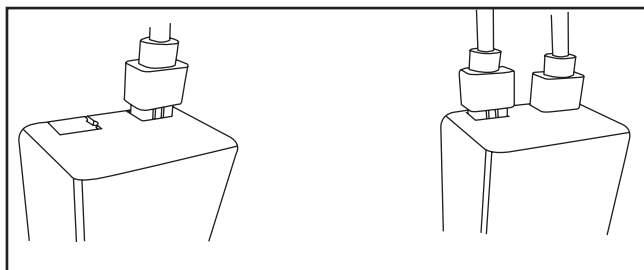


Figure 32 - Two motors plugged into slots

5. ATTACH THE DRAPERY

Snap or hook the drapery into each carrier starting with the master carrier arm and ending with the hardstop and control end. For pin ripple applications, hook the pins in one of two slots in the pin ripple carrier to direct the drapery inward or outward. Generally, pin ripple applications start and end with an inward orientation. See Figure 33.

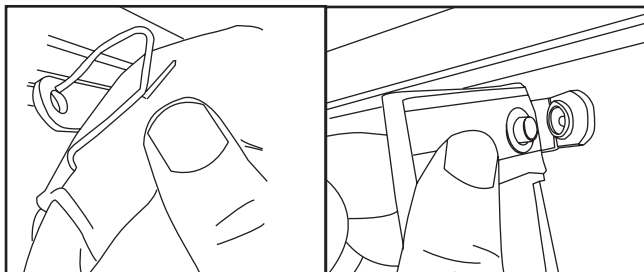


Figure 33 - Hook or snap drapery onto carriers

Wrap the remaining fabric around each control end by hooking the drapery onto the recess clips on each end. See Figure 34 for pin connector options and see Figure 35 for proper placement on the track ends.

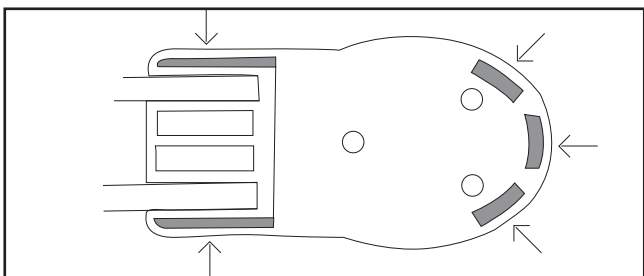


Figure 34 - Pin connector placement options

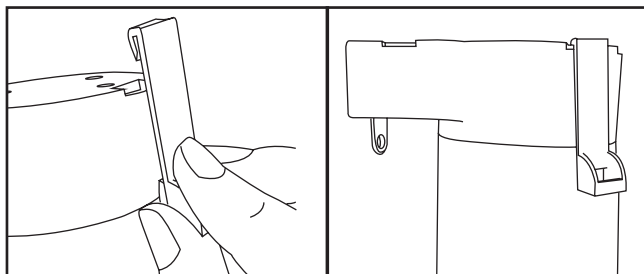


Figure 35 - Snap in pin connector

In some cases, it is desirable to connect the return of the drapery to the wall with an eye hook. Screw an eye hook into the wall where the last pin will go, then insert the pin through the eyelet. See Figure 32.

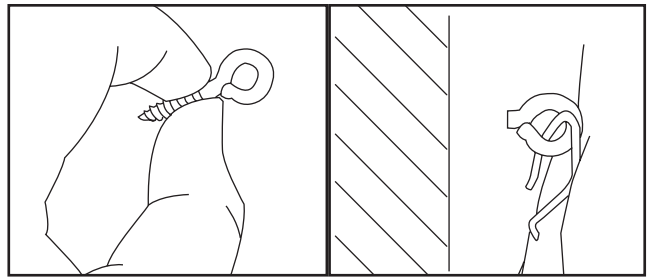


Figure 32- Screw in eyelet then insert pin through the opening

6. ATTACH THE BATON (Optional)

If using the front baton, the plastic reinforcer must be sewn into the drapery and the grommet punched in advance of drapery installation.

For front mounted baton, slide the plastic wedge through the slot in the carrier arm. Place the plastic baton hook over the grommet and screw in the screw to secure. See Figure 36.

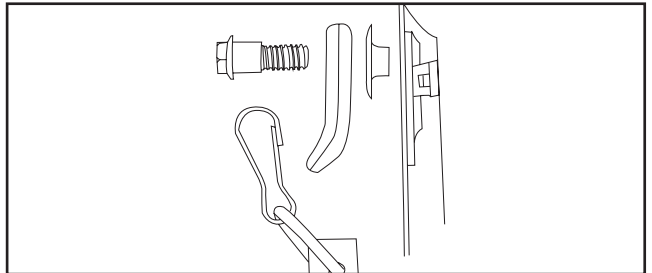


Figure 36 - Front mount baton components and install order

For a back mounted baton, locate the eyelet under the carrier arms and connect the baton with a clip. See Figure 37.

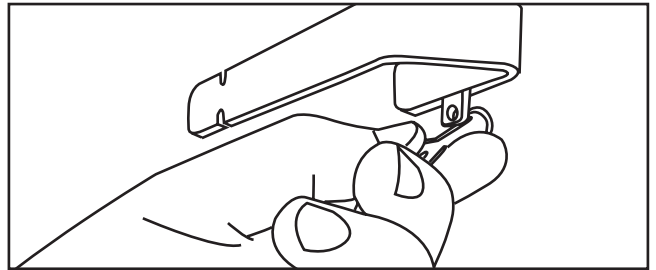


Figure 37 - Hook back baton into carrier arm eyelet

You are now ready to start up the drapery track.

II. START UP

1. CONNECT POWER

On battery powered units, untwist the Pendant and insert (6) or (8) D Alkaline batteries, negative end first. See Figure 38.

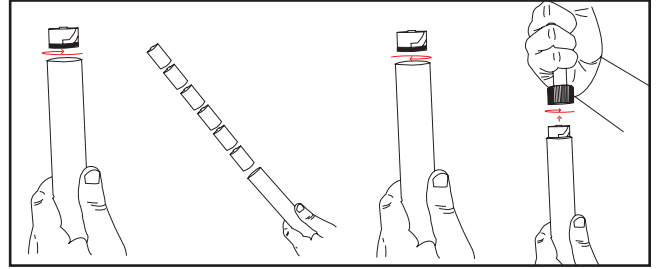


Figure 38 - Insert Batteries into the Pendant

Twist the Pendant lock to secure back onto the unit. See Figure 39.

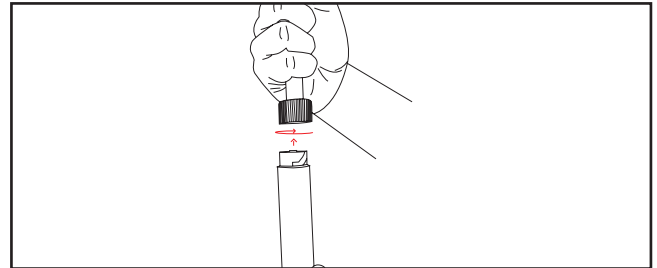


Figure 39 - Screw the Pendant onto the Cord

On rechargeable battery powered units, twist the Pendant lock to secure onto the unit. See Figure 40.

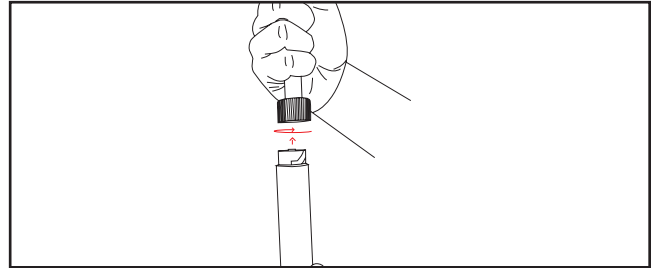


Figure 40 - Screw the Pendant onto the Cord

To charge, plug the charger power input into the jack in the bottom of the Pendant and plug the wall port into the desired outlet. The Pendant does not need to be connected to the drapery to charge. See Figure 41.

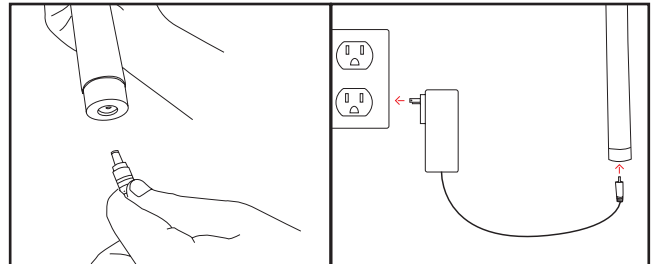


Figure 41 - Plug input into bottom of Pendant and plug into wall outlet

On low voltage units, twist the Pendant lock to secure onto the unit. See Figure 42.

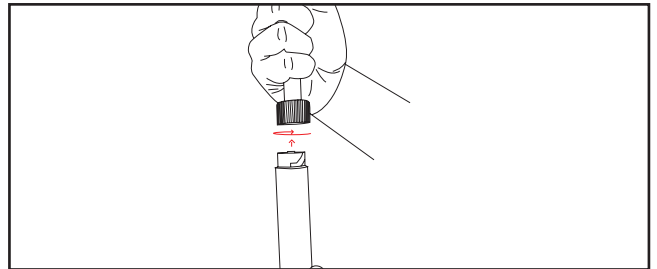


Figure 42 - Screw the Pendant onto the Cord

Power up by plugging the power input into the jack at the bottom of the Pendant, and plugging the wall port into the desired outlet. See Figure 43.

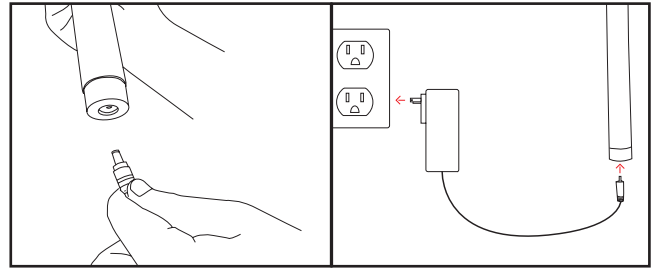


Figure 43 - Plug input into bottom of Pendant and plug into wall outlet

On units with power and control over CAT5, run the wire as desired to the power and communication port. See Figure 44.

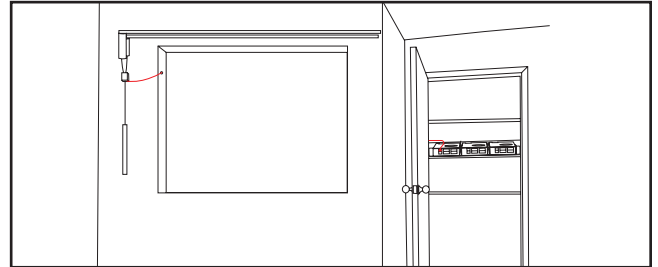


Figure 44 - Run wire to power & communication port

Plug the ethernet cable into the port at the bottom of the sensor box housing or motor. See Figure 45.

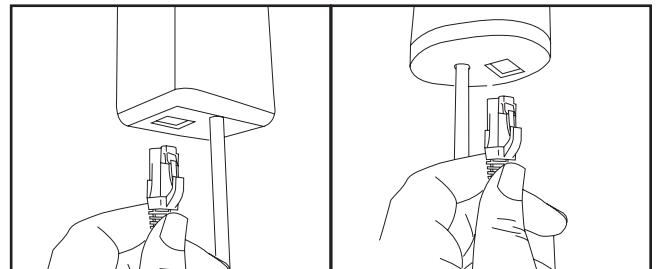


Figure 45 - Plug ethernet cable into bottom of Sensor Box or Motor

WARNING

Be sure to secure any excess cord, leaving no more than 8 inches unsecured, to reduce the risk of child strangulation.

2. SET DEFAULT OPEN AND CLOSE LIMITS

Now that your track is installed and power has been applied, the track needs to find it's open and close limits. Pull down and release the pendant to send the curtain to the full open position. Once the curtain has reached this limit and had a hardstop, pull down and release the pendant to send the curtain to the full close position and let it set that hardstop. See Figure 46.

You can now move on to optional custom programming.

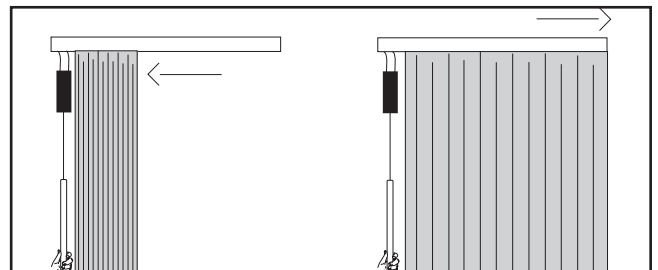


Figure 46 - Pull & release Pendant to send drapery to full close position

THIS IS THE END OF CEILING MOUNT INSTALLATION INSTRUCTIONS. PLEASE REFER TO OUR OTHER INSTRUCTIONS FOR PROGRAMMING, ZIGBEE SET UP, AND FASCIA INSTALLATION. FOR ANY QUESTIONS OR ASSISTANCE NEEDED IN INSTALLATION OR PROGRAMMING, PLEASE CONTACT US!

STATEMENTS

FCC STATEMENT

This device complies with Part 15 of the FCC Rules. Operation is subject to the following two conditions:

1. This device may not cause harmful interference, and
2. This device must accept any interference received, including interference that may cause undesired operation.

Warning: Changes or modifications not expressly approved by Current Products Co. could void the user's authority to operate the equipment.

NOTE: This equipment has been tested and found to comply with the limits for a Class B digital device, pursuant to Part 15 of the FCC Rules. These limits are designed to provide reasonable protection against harmful interference in a residential installation. This equipment generates, uses, and can radiate radio frequency energy and, if not installed and used in accordance with the instructions, may cause harmful interference to radio communications. However, there is no guarantee that interference will not occur in a particular installation. If this equipment does cause harmful interference to radio or television reception, which can be determined by turning the equipment off and on, the user is encouraged to try to correct the interference by one or more of the following measures:

- Reorient or relocate the receiving antenna.
- Increase the separation between the equipment and receiver.
- Connect the equipment into an outlet on a circuit different from that to which the receiver is connected.
- Consult the dealer or an experienced radio/TV technician for help.

RF WARNING STATEMENT

This equipment complies with FCC/ISED radiation exposure limits set forth for an uncontrolled environment. This equipment should be installed and operated to provide a separation distance of at least 20 cm from all persons.

Cet équipement est conforme aux limites d'exposition au rayonnement FCC / ISED établies pour un environnement non contrôlé. Cet équipement doit être installé et utilisé de manière à assurer une distance de séparation d'au moins 20 cm de toutes les personnes.

IC STATEMENT

This device complies with Industry Canada license-exempt RSS standard(s). Operation is subject to the following two conditions: (1) this device may not cause interference, and (2) this device must accept any interference, including interference that may cause undesired operation of the device.

Le présent appareil est conforme aux CNR d'Industrie Canada applicables aux appareils radio exempts de licence. L'exploitation est autorisée aux deux conditions suivantes: (1) l'appareil ne doit pas produire de brouillage, et (2) l'utilisateur de l'appareil doit accepter tout brouillage radioélectrique subi, même si le brouillage est susceptible d'en compromettre le fonctionnement.



844-307-7435
support@currentproductscorp.com

www.currentproductscorp.com