

SILENT TRAC
by **CURRENT**

FASCIA INSTALLATION GUIDE

Install the Fascia2
Removing a Fascia Clip3
Statements4

I. INSTALL THE FASCIA

1. Install the Clips

On ceiling mount installations, confirm the fascia clips are already installed on the track drapery, then proceed to step 2.

On wall mounted track installations, snap the fascia clips into the recess at the top of the drapery track, one side at a time. Use a fascia clip between each set of brackets. Clips snap into the top track by hooking onto the front lip of the top of the track and then pressing down on the back. See Figure 1.

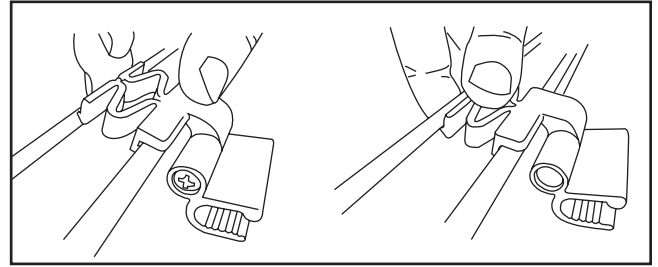


Figure 1 - Snap in fascia clips

Install the center clip first, then install clips on each end of the track. Install a clip every 16"-24". Space outer fascia mounting clips as close to outside brackets as possible.

2. Snap on the Fascia

Orient the fascia so the protrusion is at the top. Starting in the middle, snap the protruding feature of the fascia into the "U" shaped clips until it snaps. Starting from the center and moving outward, snap fascia onto the clips. For larger installs, it may require two people to install the fascia.

Snap the protrusion into all the remaining clips. Be sure the fascia is positioned where desired, with the proper amount of fascia left on each side of the track. See Figure 2.

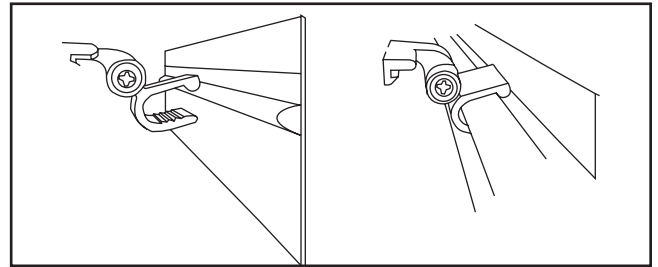


Figure 2 - Snap fascia protrusion into clips

3. Adjust Fascia Angle

If desired, on fascias 3" and above, the angle of the fascia can be adjusted by using a phillips head screwdriver to pivot the angle of the clip mouth. Be sure to adjust the angle on all clips to create a uniform look. See Figure 3.

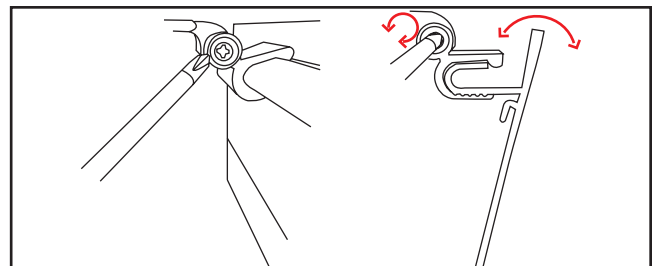


Figure 3 - Adjust fascia angle if desired

4. Style the Returns

Most fascia styles allow for returns to be bent in either a rounded or angled manner in the field. By hand, gently bend the fascia ends into the desired shape. See Figure 4.

For hard bends, we recommend removing the fascia from the clips, then using a flat surface like a table to help bend the fascia.

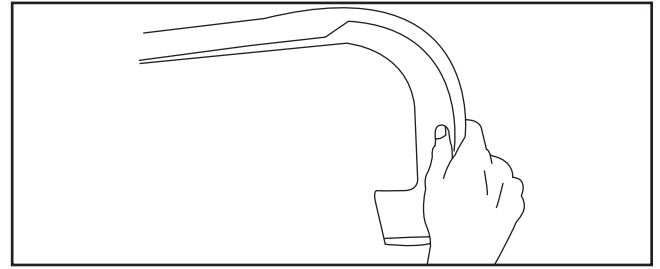


Figure 4 - Bend return into desired shape

5. Check for levelness

Note the levelness of the fascia. It may be necessary to attach the fascia to the wall with removable VHB tape to hold fascia at the correct level.

II. REMOVING A FASCIA CLIP

1. Pop out the back of the clip

To remove a clip, begin by inserting a flat head screwdriver into the pocket at the back of the track.

Angle the screwdriver towards the window to apply pressure to the bottom of the fascia clip. The back of the clip should pop out of the track groove. See Figure 5.

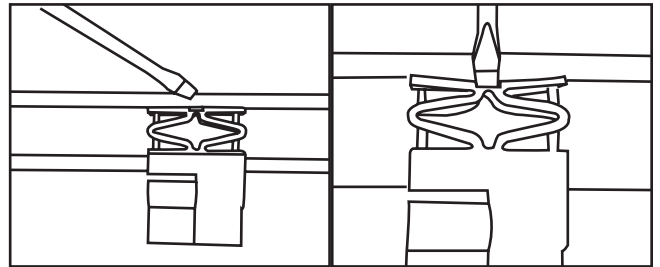


Figure 5 - Pop the back of the clip from the track

2. Pop out the front of the clip

After the back of the clip has been popped out of the track, apply slight pressure to the front of the clip to dislodge the feature from the track groove. See Figure 6.

Use a rolling motion to remove the clip from the track.

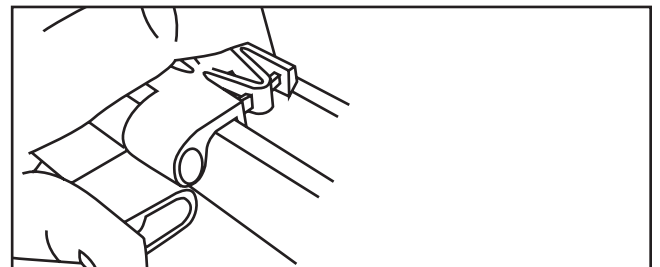


Figure 6 - Pop the front of the clip from the track

III. STATEMENTS

FCC STATEMENT

This device complies with Part 15 of the FCC Rules. Operation is subject to the following two conditions:

1. This device may not cause harmful interference, and
2. This device must accept any interference received, including interference that may cause undesired operation.

Warning: Changes or modifications not expressly approved by Current Products Co. could void the user's authority to operate the equipment.

NOTE: This equipment has been tested and found to comply with the limits for a Class B digital device, pursuant to Part 15 of the FCC Rules. These limits are designed to provide reasonable protection against harmful interference in a residential installation. This equipment generates, uses, and can radiate radio frequency energy and, if not installed and used in accordance with the instructions, may cause harmful interference to radio communications. However, there is no guarantee that interference will not occur in a particular installation. If this equipment does cause harmful interference to radio or television reception, which can be determined by turning the equipment off and on, the user is encouraged to try to correct the interference by one or more of the following measures:

- Reorient or relocate the receiving antenna.
- Increase the separation between the equipment and receiver.
- Connect the equipment into an outlet on a circuit different from that to which the receiver is connected.
- Consult the dealer or an experienced radio/TV technician for help.

RF WARNING STATEMENT

This equipment complies with FCC/ISED radiation exposure limits set forth for an uncontrolled environment. This equipment should be installed and operated to provide a separation distance of at least 20 cm from all persons.

Cet équipement est conforme aux limites d'exposition au rayonnement FCC / ISED établies pour un environnement non contrôlé. Cet équipement doit être installé et utilisé de manière à assurer une distance de séparation d'au moins 20 cm de toutes les personnes.

IC STATEMENT

This device complies with Industry Canada license-exempt RSS standard(s). Operation is subject to the following two conditions: (1) this device may not cause interference, and (2) this device must accept any interference, including interference that may cause undesired operation of the device.

Le présent appareil est conforme aux CNR d'Industrie Canada applicables aux appareils radio exempts de licence. L'exploitation est autorisée aux deux conditions suivantes: (1) l'appareil ne doit pas produire de brouillage, et (2) l'utilisateur de l'appareil doit accepter tout brouillage radioélectrique subi, même si le brouillage est susceptible d'en compromettre le fonctionnement.



844-307-7435
support@currentproductscorp.com

www.currentproductscorp.com