

SILENT TRAC
by **CURRENT**

AMAZON ECHO PLUS SET UP (USING BUILT IN HUB)

Integrate with Amazon Echo Plus -Use Alexa’s Built in Zigbee Hub2
Statements3

I. INTEGRATE WITH AMAZON ECHO PLUS- USE ALEXA'S BUILT IN ZIGBEE HUB

1. SET UP YOUR ECHO PLUS

If your Alexa device is not yet set up, do so now by following the instructions that came with your device.

2. ADD A DEVICE

From the menu in the Alexa app, go to “Devices” and hit the “+” in the top right hand corner of the screen. Hit “Add Device” on the menu that pops up on the screen. Select “Light” from the menu on the next screen. Scroll down to the bottom of the next screen to select “Other” as the brand, then hit “Discover Devices.”

While Alexa is searching, pull down and release the Pendant twice on each drapery you want to pair to Alexa.

Each drapery you are pairing will show up as a lightbulb.

3. CUSTOMIZE IN APP

In the Alexa app, you can change the name of each device to better your control of the devices. You can also add custom commands. We suggest custom naming each device, and creating commands for “open” and “close”.

See Figure 25 for all integration steps.

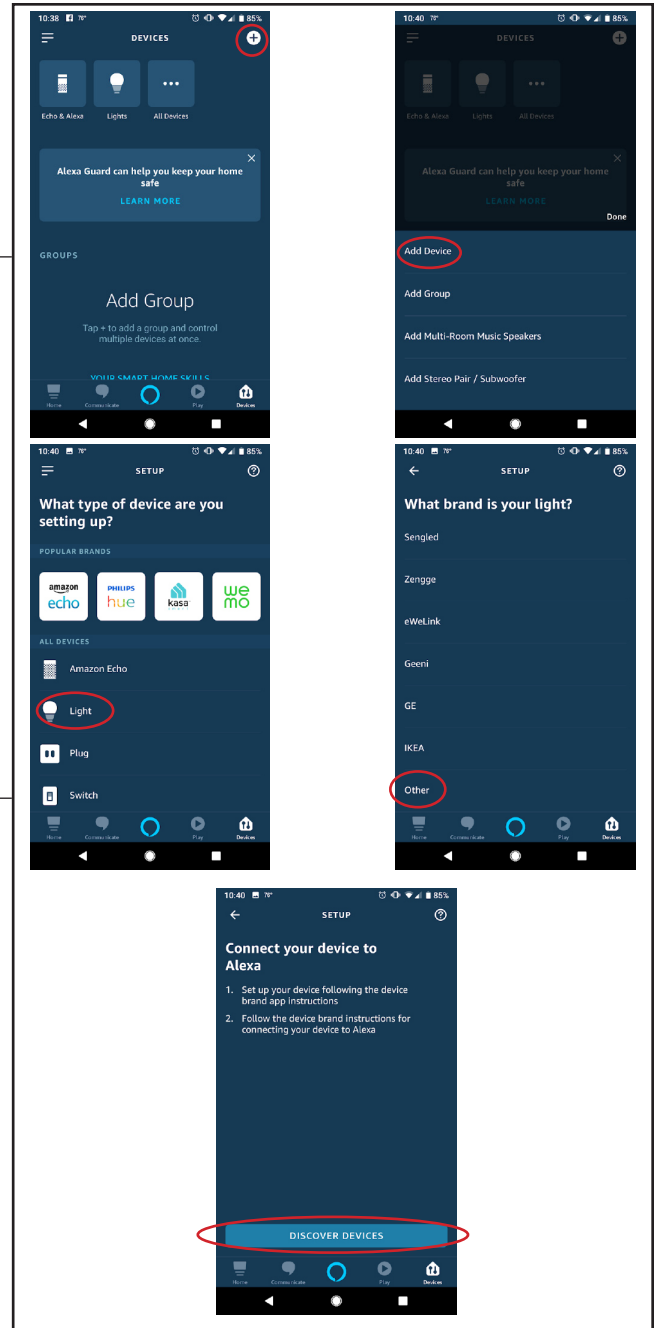


Figure 25 - Alexa App Steps

II. STATEMENTS

FCC STATEMENT

This device complies with Part 15 of the FCC Rules. Operation is subject to the following two conditions:

1. This device may not cause harmful interference, and
2. This device must accept any interference received, including interference that may cause undesired operation.

Warning: Changes or modifications not expressly approved by Current Products Co. could void the user's authority to operate the equipment.

NOTE: This equipment has been tested and found to comply with the limits for a Class B digital device, pursuant to Part 15 of the FCC Rules. These limits are designed to provide reasonable protection against harmful interference in a residential installation. This equipment generates, uses, and can radiate radio frequency energy and, if not installed and used in accordance with the instructions, may cause harmful interference to radio communications. However, there is no guarantee that interference will not occur in a particular installation. If this equipment does cause harmful interference to radio or television reception, which can be determined by turning the equipment off and on, the user is encouraged to try to correct the interference by one or more of the following measures:

- Reorient or relocate the receiving antenna.
- Increase the separation between the equipment and receiver.
- Connect the equipment into an outlet on a circuit different from that to which the receiver is connected.
- Consult the dealer or an experienced radio/TV technician for help.

RF WARNING STATEMENT

This equipment complies with FCC/ISED radiation exposure limits set forth for an uncontrolled environment. This equipment should be installed and operated to provide a separation distance of at least 20 cm from all persons.

Cet équipement est conforme aux limites d'exposition au rayonnement FCC / ISED établies pour un environnement non contrôlé. Cet équipement doit être installé et utilisé de manière à assurer une distance de séparation d'au moins 20 cm de toutes les personnes.

IC STATEMENT

This device complies with Industry Canada license-exempt RSS standard(s). Operation is subject to the following two conditions: (1) this device may not cause interference, and (2) this device must accept any interference, including interference that may cause undesired operation of the device.

Le présent appareil est conforme aux CNR d'Industrie Canada applicables aux appareils radio exempts de licence. L'exploitation est autorisée aux deux conditions suivantes: (1) l'appareil ne doit pas produire de brouillage, et (2) l'utilisateur de l'appareil doit accepter tout brouillage radioélectrique subi, même si le brouillage est susceptible d'en compromettre le fonctionnement.



844-307-7435

support@currentproductscorp.com

www.currentproductscorp.com